

# Entegris Innovates for Paperless Plant Operations

Presented by Helen Frericks, Sr Director of IT,  
Enterprise Business Services

and

Robb Neuenschwander, Sr Director of Strategy,  
Mindset Consulting

# ASUG

The Hub of the SAP Community

# Entegris at a Glance

A leading supplier of advanced materials and process solutions for the semiconductor, life sciences, and other high-tech industries



FOUNDED  
1966



HEADQUARTERS  
Billerica, MA



EMPLOYEES  
~8,000



2023 NET SALES  
\$3.5B



PATENTS  
~4,400



## Business Divisions

- Materials Solutions (MS)
- Microcontamination Control (MC)
- Advanced Materials Handling (AMH)

## Our Mission

To help our customers improve their productivity, performance and technology by providing enhancing materials and process solutions for the most advanced manufacturing environments



# Global Infrastructure with Local R&D, Manufacturing, and Support



North America

## Differentiated Product Development

- Deep technical expertise and application knowledge
- Direct engagement by engineering teams
- Pilot capability at most sites



Europe and Israel

## Strong Customer Relationships

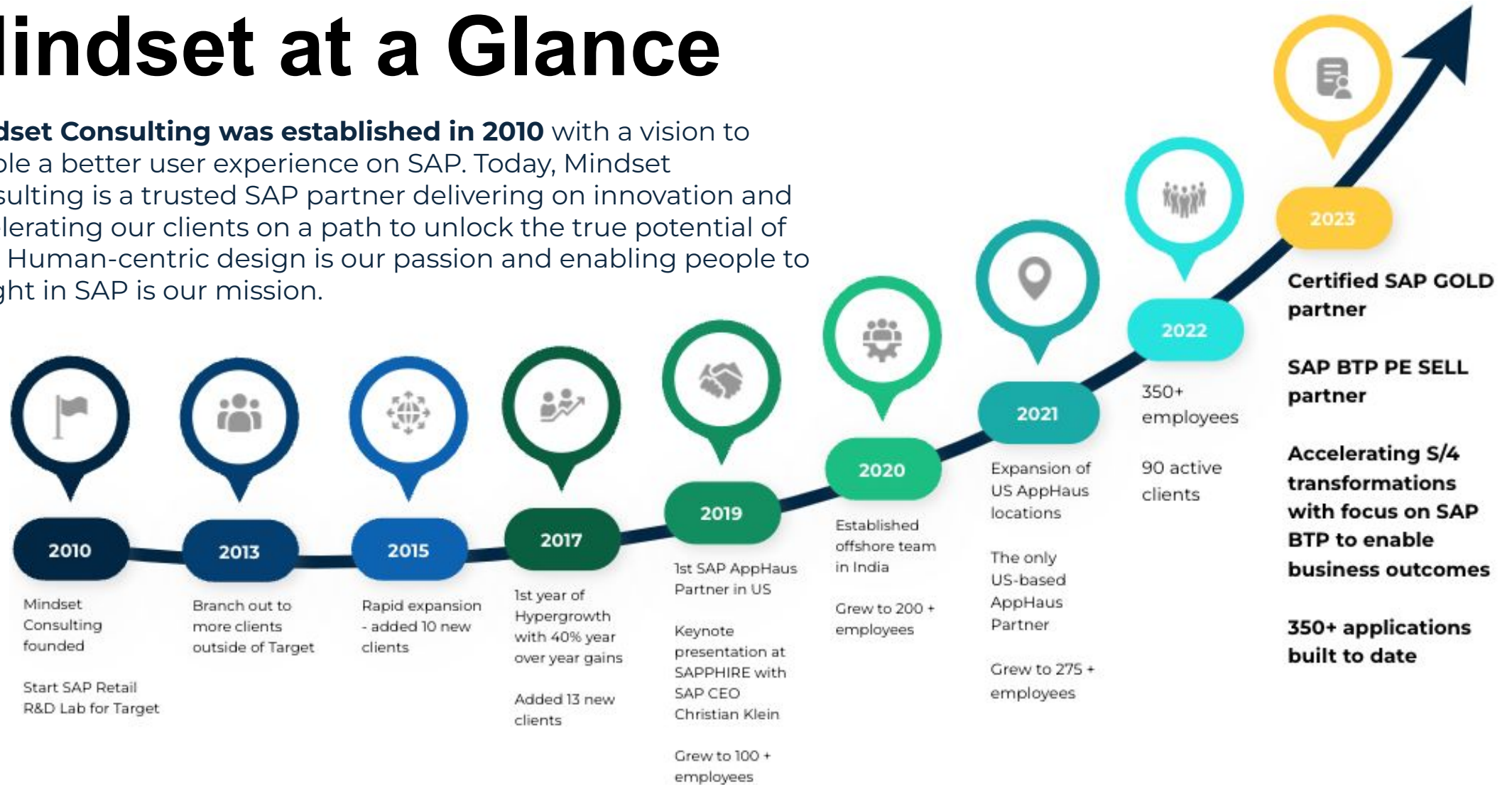
- Dedicated customer support organization focused
- Collaborative customer engagements leverage global state-of-the-art infrastructure and tech centers



Asia

# Mindset at a Glance

**Mindset Consulting was established in 2010** with a vision to enable a better user experience on SAP. Today, Mindset Consulting is a trusted SAP partner delivering on innovation and accelerating our clients on a path to unlock the true potential of SAP. Human-centric design is our passion and enabling people to delight in SAP is our mission.

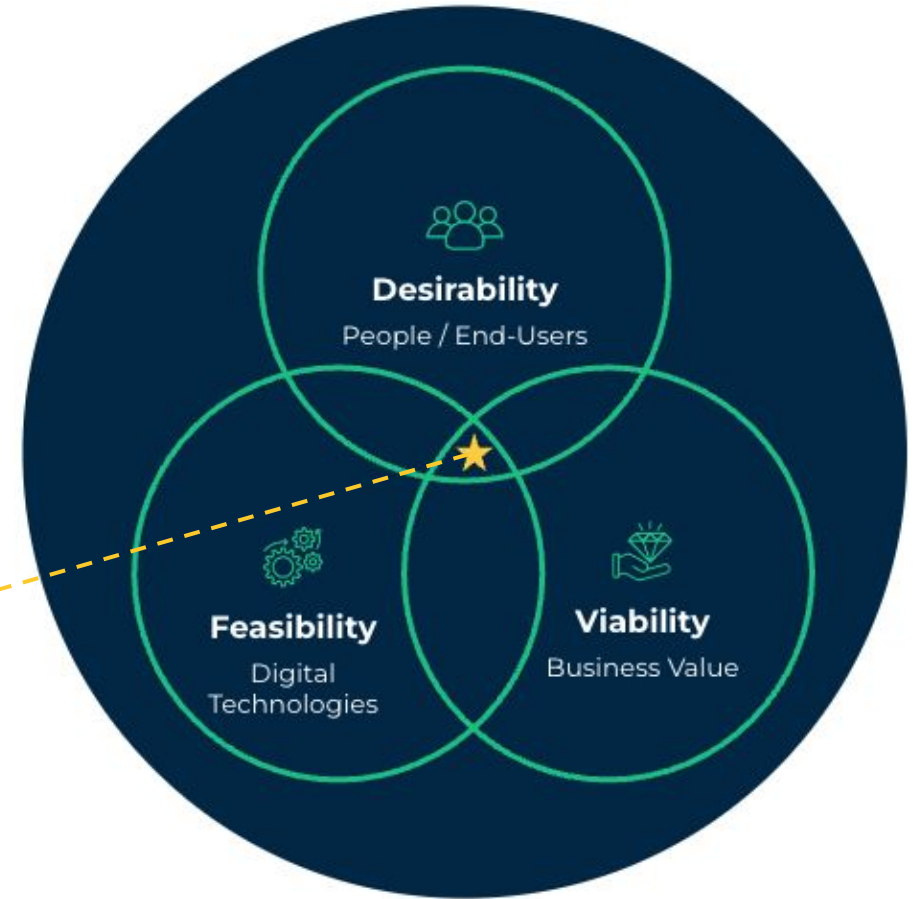


# Mindset Approach

## Human-Centered Innovation

Mindset understands that the most important transformation in your S/4 journey is your people. Human Centered Design is our passion. Enabling businesses to delight in thoughtfully designed enterprise solutions is our mission.

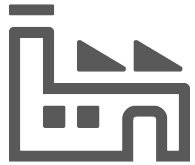
**MINDSET**  
Sweet Spot For Innovation



# Entegris KSP S Kaohsiung TW



# KSP Context – Challenges and Risks



## State of Art Factory

- Looking for a more state-of-the-art process and set of user tools
- Seeking efficiencies and scalability
- Not pen and paper!



## Existing Devices Not Ideal

- Particularly for non-English speaker
- Lacked screen real estate for sufficient detail



## Need to Build for ECC Today (S/4 for Future)

- Interface to existing ECC warehouse processes
- Design solutions that can be ported to future state (S/4)

# KSP Context – Business Value



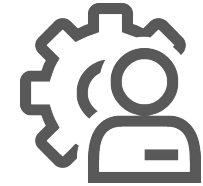
## Process Efficiencies

- Realtime information at worker's fingertips
- Interaction on the plant floor (not the back room)
- Better decision making



## Accuracy

- Reduced manual entry - fewer data entry mistakes
- Reduction in rework and wasted process cycles and material



## Employee Experience

- Higher employee satisfaction
- Higher worker productivity
- Lower staff and training costs



# Exploring the Experience



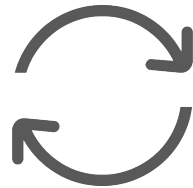
**Design Thinking**



**Blended Teams**



**Critical Success  
Factors**



**Agile Methodology**



**Pilot Facility**

**Thank you.**

Robb Neuenschwander

<http://linkedin.com/in/robb-neuenschwander/>

<http://mindsetconsulting.com>

**dsUG**

The Hub of the SAP Community